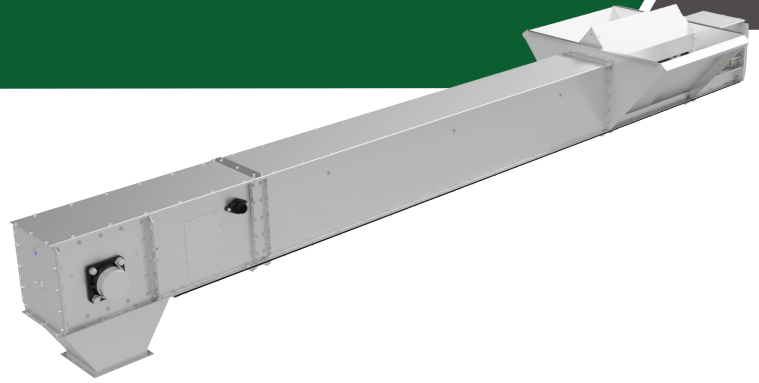


# CHAIN CONVEYOR TYPE RL



## GENERAL

Brand	Cimbria
Model	RL Chain Conveyor
Capacity range	72–212 m <sup>3</sup> /h
Chain speed	up to 0.60 m/s
Application	Moving dry bulk materials, such as grains and grain-like products

Cimbria type RL chain conveyor is designed for moving dry bulk materials, such as grains and grain-like products, but can successfully be used to transport other materials, such as granulate, shavings etc. Cimbria will assist with consulting.

The conveyor can be arranged with several slide gates for material outlets. The conveyor can be configured for reversible operation.

Curved back plate used with return buckets can ensure that the material does not accumulate at the end of the conveyor.

Intermediate sections with double bottom and raised cover can be equipped with capacity regulation.

## FEATURES

- Single bottom casing with return rollers or double bottom casing
- Dual-side or top loading
- Single strand conveyor chain, pins-and-bush assembly; data sheet: *Conveyor Chain*
- Welded flights with bolted scraper flaps
- Manual chain tensioning at tail end
- Wear plates on bottom

## DRIVE SYSTEM

- Parallel shaft or/and helical gearmotor, hollow shaft
- Gearmotor mounted on right or left hand side as specified

## CONTROLLERS

- Overflow sensing
- Rotation sensing (optional)
- Bearing heat sensing (optional)
- Explosion relief (optional); data sheet 50

## ACCESSORIES

- Outlet for Q-pipe system
- Top covers for inlet sections
- Slide gates; data sheet: *Slide Gate Type RL/RS/RM*
- Return buckets for chain
- Inspection windows
- Wear plates along lower sides
- Sun cover for gearmotor
- Support system; data sheet: *Chain Conveyor Support System*
- Centre drive
- Air cleaning

## Technical data

Maximum capacity	RL-3	72 m <sup>3</sup> /h
	RL-5	119 m <sup>3</sup> /h
	RL-7	161 m <sup>3</sup> /h
	RL-8	212 m <sup>3</sup> /h
Maximum bulk density	850 kg/m <sup>3</sup>	
Drive motor size	According to application	
Chain speed	Up to 0.60 m/s	
Sound pressure level	75 to 85 dB(A)	
Maximum length and angle of slope	Depends on the material properties and the length and angle of the conveyor	
Operating conditions	Indoor and outdoor	
	-15°C to +40°C ambient	

NOTE: All capacities in the above table are based on the handling of dry and cleaned wheat.

## Materials

Casing	Standard	Pre-galvanised steel	
	Optional	Hot-dip galvanised steel Stainless steel Painted steel	
Wear plates, bottom	PE-UHMW, antistatic, 10 mm		
Wear plates, sides	Optional	Hardox® steel, 4 mm	
Chain	Steel, oil coated		
Rollers	Standard	RL-3, -5	Nylon
		RL-7	Nylon (ø22 bush)
		RL-8	Steel, oil coated
	Optional	RL-3, -5, -7	Steel, oil coated
Scraper flaps	PE-UHMW, antistatic		

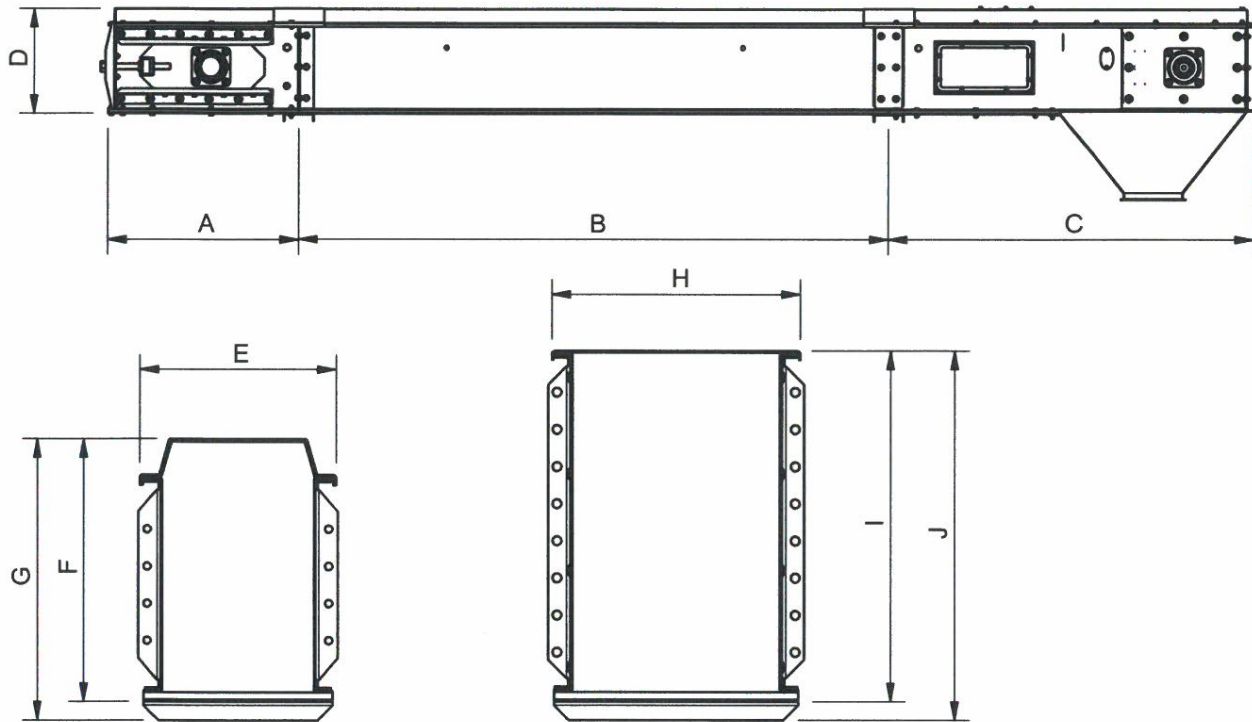
## Compliance

Atex	Standard	Non-zone inside Non-zone outside	
	Optional	Zone 22 or 21 inside Zone 22 or 21 outside	

NOTE: Specific requirements apply for ATEX compliance.

# CHAIN CONVEYOR TYPE RL

## DIMENSIONS



	A [mm]	B [mm]	C [mm]	D [mm]	E [mm]	F [mm]	G [mm]	H [mm]	I [mm]	J [mm]
<b>RL-3</b>	645	490/990/ 1990/3 000	1 225	352	265	354	379			
<b>RL-5</b>	645	490/990/ 1990/3 000	1 225	414	311	414	439			
<b>RL-7</b>	645	490/990/ 1990/3 000	1 225	472				336	472	497
<b>RL-8</b>	645	490/990/ 1990/3 000	1 225	510				404	510	540

	Grain layer thickness [mm]	Grain layer width [mm]	Thickness, top plate [mm]	Thickness, side plate [mm]	Thickness, bottom plate [mm]	Weight with material [kg/m] <sup>[1]</sup>	Driving section [kg] <sup>[2]</sup>	Intermediate section [kg/m]	Tension section [kg]
<b>RL-3</b>	180	205	2	2	3	70	60	35	58
<b>RL-5</b>	240	255	2	2	3	100	80	45	70
<b>RL-7</b>	290	280	2	3	3	140	120	70	110
<b>RL-8</b>	330	330	2	3	3	165	140	75	100

[1] With material bulk density 760 kg/m<sup>3</sup>

[2] Weight of driving section without motor